

VOLVO EXCAVATORS

# EC140D

13.0-16.2 t 116 hp



# A PASSION FOR PERFORMANCE.

At Volvo Construction Equipment, we're not just coming along for the ride. Developing products and services that raise productivity – we are confident we can lower costs and increase profits for industry experts. Part of the Volvo Group, we are passionate about innovative solutions to help you work smarter – not harder.

## Helping you to do more

Doing more with less is a trademark of Volvo Construction Equipment. High productivity has long been married to low energy consumption, ease of use and durability. When it comes to lowering life-cycle costs, Volvo is in a class of its own.

## Designed to fit your needs

There is a lot riding on creating solutions that are suited to the particular needs of different industry applications. Innovation often involves high technology – but it doesn't always have to. Some of our best ideas have been simple, based on a clear and deep understanding of our customers' working lives.



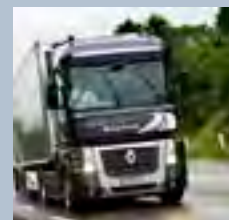
## You learn a lot in 175 years

Over the years, Volvo has advanced solutions that have revolutionized the use of construction equipment. No other name speaks Safety louder than Volvo. Protecting operators, those around them and minimizing our environmental impact are traditional values that continue to shape our product design philosophy.

## We're on your side

We back the Volvo brand with the best people. Volvo is truly a global enterprise, one that is on standby to support customers quickly and efficiently – wherever they are.

## We have a passion for performance.



Volvo Trucks

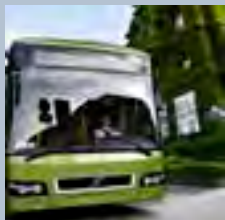
Renault Trucks

Mack Trucks





UD Trucks



Volvo Buses



Volvo Construction Equipment



Volvo Penta



Volvo Aero



Volvo Financial Services

# DESIGNED FOR EFFICIENCY.

Introducing Volvo's powerful, fuel efficient and environmentally responsible D-Series crawler excavators. Featuring Volvo's unique, award-winning ECO mode, the D4 Stage IIIB/ Tier 4 Interim engine and improved hydraulics, these machines deliver reduced fuel consumption and cycle times resulting in up to 12% rise in fuel efficiency improvement as well as increased digging performance.

## Volvo D4 Stage IIIB/ Tier 4 Interim engine

Volvo's new fuel efficient engine features an active-type Diesel Particulate Filter (DPF) and a regeneration process to lower emissions. The unique method does not interrupt operation, performance or productivity.

## ECO mode

Volvo's unique, award-winning ECO mode features sophisticated electronic pump control technology which contributes to up to 5% of the machine's total improved fuel efficiency without any loss of performance in most operating conditions.



## Work modes

Operators can select the best work mode for the task at hand to ensure optimum performance and fuel efficiency. Choose the correct mode according to your working conditions for added versatility and increased performance.

## Proportional controlled viscous-clutch

Optimized fan speed control from the new proportional controlled viscous-clutch for reduced fuel consumption.

Step inside Volvo's care cab and enjoy excellent all-round visibility. In this safe and comfortable environment operators will feel efficient and in control all day long. See more and do more with Volvo.

**Rubber/Silicone oil viscous mounts**

Spring is added to the mounts to improve shock absorption and reduce vibration. Increased operator comfort means more productivity.

**I-ECU monitor**

Large color monitor provides excellent clarity in all light conditions. Using a control panel the operator and service technician can make quick visual and diagnostic checks, increasing uptime and productivity. The monitor also displays camera images – up to four at a time.

**ROPS**

The cab features Roll Over Protective Structure (ROPS) which meets the ISO 12117-2 safety standard for increased peace of mind in the unlikely event of machine roll over.



**Smart consoles and switches**

High quality consoles and conveniently located switches for easy access and improved operator efficiency.

**Automatic climate control system**

Operators can set their ideal temperature with Volvo's powerful climate control system. Industry leading air circulation and defrosting capability is delivered with 14 well-spaced vents for increased comfort and productivity.

**Rear view camera**

Rear view camera provides visibility via the color I-ECU monitor for increased safety. The camera sits on top of the counterweight to project the area behind the machine.

# CONTROL IT. FASTER.

Volvo gives you more. More power, more capacity and more weight – command the new D-Series crawler excavators to handle your workload and enjoy increased total performance from our improved hydraulic system. Trust Volvo to put you in control.

## Digging power and speed

Enhanced digging performance and faster cycle times, particularly when working with hard materials, from increased engine power and improved hydraulics.



## Lifting capacity

Excellent lifting capacity and stability allows the machine to lift heavier objects ensuring greater productivity.



## Grading

Superb grading performance from improved hydraulic system. Effortlessly smooth surfaces with harmonized flow control and well-matched attachment speed.



## Attachment Management System

Allows storage of up to 18 different attachment presets and permits hydraulic flow (standard) and pressure (optional) to be adjusted to enable the use of various attachments for increased versatility. Operators can change attachments quickly without manual setup.

# SERVICEABILITY. SIMPLIFIED.



## Serviceability

Grouped filters and accessible radiators are quick to access from ground level via large, wide compartment doors – increasing safety. Easy access for maintenance means regular checks get done faster, giving you more uptime.

With built in serviceability the new Volvo D-Series crawler excavators guarantee you more uptime. Easy access to grouped service points allows for fast and effortless maintenance and service checks. Achieve more with Volvo.

#### Grouped filters

Grouped, ground level filters in the pump compartment are accessible via one door for faster servicing and more machine uptime. This reduces the need for conducting maintenance at height, increasing safety.



#### Rear access

Rear entry behind the cab grants safe and convenient access to the main hydraulic components and engine. Newly designed stairway allows for access to the top of the superstructure.



#### Service intervals on I-ECU

A service mode is incorporated into the I-ECU color monitor to enable diagnostic checks. Four separate service intervals – the engine oil/filter, fuel filter/water separator, hydraulic oil and hydraulic oil filter – are displayed on the monitor.



#### Stays and locking devices

Volvo's automatic stays prevent doors being blown closed for added safety, they can easily be manually released. Automatic locks ensure the doors close properly and enhance appearance.



# TOP PERFORMANCE DESERVES SUPPORT.

The day you receive your new Volvo Excavator is just the start of your working relationship with Volvo. From service and maintenance to our CareTrack telematics system – Volvo has a comprehensive and sophisticated aftermarket portfolio to continuously add value to your business.

Volvo designed and built your machines, so no-one knows how to keep them working in top condition more than us. When it comes to your machine, our Volvo trained technicians are the experts.

Our technicians work with industry leading diagnostic tools and techniques, using only Genuine Volvo Parts to deliver the highest levels of quality and service. Talk to your Volvo dealer about how genuine Volvo services can best provide the service and maintenance plan that is the right fit for you and your business.



State-of-the-art machines require state-of-the-art support and your Volvo dealer can provide a catalogue of services designed to get the most out of your machine, helping you maximise uptime, productivity and residual value. Your Volvo dealer can provide a number of sophisticated support offers, including:

Service plans ranging from routine wear inspections, through to comprehensive maintenance and repair agreements.

Analysis and diagnostics to help you understand how your machine is running, highlight potential maintenance issues and identify where performance can be improved.

Eco Operator training courses can help your operators work towards a safer, more productive and fuel efficient performance.

# TAKE A LOOK AROUND.



## Fuel efficiency

The Volvo D4 Stage IIIB/ Tier 4 Interim engine together with improved hydraulics deliver up to 12% rise in fuel efficiency and shorter cycle times for increased performance.

## ECO mode

Volvo's unique, award-winning ECO mode gives more fuel efficiency without any loss of performance.

## Work modes

Achieve optimum performance and increased fuel efficiency by selecting the best work mode for the task at hand.



## Controllability

Smart hydraulic system for smooth and highly responsive combined operation and travel by prioritizing oil flow according to requirements.

## Digging power and speed

Perform at a higher level with increased digging power and faster cycle times for greater productivity.





#### CareTrack\*

Volvo's telematics system guides machine owners towards optimized productivity and their next service – remotely.



#### Volvo Care Cab

Enjoy all-round visibility, easy to access controls and excellent air ventilation in Volvo's spacious cab which meets ROPS safety standards.

#### Grouped filters

Grouped, ground level filters in the pump compartment enable faster servicing and more machine uptime.

#### Rear access

Rear entry behind the cab grants safe and convenient access to the main hydraulic components and engine.

#### Powerful engine

Volvo's efficient D4 Stage IIIB/ Tier 4 Interim engine gives you more power while consuming less fuel for low emission levels.



#### Serviceability

Premium serviceability from large, wide opening doors featuring automatic stays and locking devices.

#### Dozer blade

Increase versatility and stability with a dozer blade.

\* In markets where CareTrack is available

# VOLVO EC140D IN DETAIL.

## Engine

The latest generation, Volvo engine Tier 4i (Stage IIIB) emissions compliant diesel engine fully meets the demands of the latest, emissions regulations. The engine uses precise, highpressure fuel injectors, turbo charger and air-to-air intercooler, and electronic engine controls to optimize machine performance.

Air Filter: 3-stage with precleaner.

Automatic Idling System: Reduces engine speed to idle when the levers and pedals are not activated resulting in less fuel consumption and low cab noise levels.

Engine	Volvo	D4H
Max power at	r/s / r/min	33,3 / 2000
Net, ISO 9249/SAE J1349	kW / hp	84 / 114
Gross, ISO 14396/SAE J1995	kW / hp	85 / 116
Max torque at	Nm/ r/min	535 / 1500
No. of cylinders		4
Displacement	l	4,036
Bore	mm	101
Stroke	mm	126

## Electrical system

High-capacity electrical system that is well protected. Waterproof double-lock harness plugs are used to secure corrosion-free connections. The main relays and solenoid valves are shielded to prevent damage. The master switch is standard.

Contronics provides advanced monitoring of machine functions and important diagnostic information on the I-ECU.

Voltage	V	28
Batteries	V	2 x 12
Battery capacity	Ah	100
Alternator	V / Ah	28 / 110

## Swing system

The swing system uses an axial piston motors, driving a planetary gearbox for maximum torque. An automatic holding brake and anti-rebound valve are standard.

Max. slew speed	r/min	12,5
Max. slew torque	kNm	38,8

## Drive

Each track is powered by an automatic two-speed shift travel motor. The track brakes are multi-disc, spring-applied and hydraulic released. The travel motor, brake and planetary gears are well protected within the track frame.

Max. drawbar pull	kN	118
Max. travel speed	km/h	3,1/5,5
Gradeability	°	35

## Undercarriage

The undercarriage has a robust X-shaped frame. Greased and sealed track chains are standard.

### EC140DL

Track shoe		2 x 46
Link pitch	mm	171
Shoe width, triple grouser	mm	500/600/700/750
Shoe width, triple grouser (HD)	mm	600
Shoe width, rubber shoe	mm	500
Bottom rollers		2 x 7
Top rollers		2 x 1

### EC140DLM

Track shoe		2 x 42
Link pitch	mm	190
Shoe width, triple grouser	mm	600/700/800/900
Bottom rollers		2 x 6
Top rollers		2 x 2

## Hydraulic system

The hydraulic system, also known as the "Automatic Sensing Work Mode," is designed for high-productivity, high-digging capacity, high-maneuvering precision and excellent fuel economy. The summation system, boom, arm and swing priority along with boom, arm and bucket regeneration provides optimum performance. The following important functions are included in the system:

Summation system: Combines the flow of both hydraulic pumps to ensure quick cycle times and high productivity.

Boom priority: Gives priority to the boom operation for faster raising when loading or performing deep excavations.

Arm priority: Gives priority to the arm operation for faster cycle times in leveling and for increased bucket filling when digging.

Swing priority: Gives priority to swing functions for faster simultaneous operations.

Regeneration system: Prevents cavitation and provides flow to other movements during simultaneous operations for maximum productivity.

Power boost: All digging and lifting forces are increased.

Holding valves: Boom and arm holding valves prevent the digging equipment from creeping.

### Main pump, Type 2 x variable displacement axial piston pumps

Maximum flow	l/min	2x124
--------------	-------	-------

### Pilot pump, Type Gear pump

Maximum flow	l/min	1x20
--------------	-------	------

## Hydraulic motors

Travel: Variable displacement axial piston motor with mechanical brake

Slew: Fixed displacement axial piston motor with mechanical brake

### Relief valve setting

Implement	MPa	32,4 / 34,3
-----------	-----	-------------

Travel circuit	MPa	34,3 / 34,3
----------------	-----	-------------

Slew circuit	MPa	24,5 / 24,5
--------------	-----	-------------

Pilot circuit	MPa	3,9 / 3,9
---------------	-----	-----------

## Hydraulic cylinders

Mono boom		2
-----------	--	---

Bore x Stroke	ø x mm	105 x 980
---------------	--------	-----------

2 piece boom		1
--------------	--	---

Bore x Stroke	ø x mm	160 x 765
---------------	--------	-----------

Arm		1
-----	--	---

Bore x Stroke	ø x mm	120 x 1 045
---------------	--------	-------------

Bucket		1
--------	--	---

Bore x Stroke	ø x mm	100 x 865
---------------	--------	-----------

## Service refill capacities

Fuel tank	l	258
-----------	---	-----

Hydraulic system, total	l	250
-------------------------	---	-----

Hydraulic tank	l	91
----------------	---	----

Engine oil	l	16
------------	---	----

Engine coolant	l	28
----------------	---	----

Swing reduction unit	l	3,9
----------------------	---	-----

Travel reduction unit	l	2 x 2,2
-----------------------	---	---------

## Cab

The operator's cab has easy access via a wide door opening. The cab is supported on hydraulic dampening mounts to reduce shock and vibration levels. These along with sound absorbing lining provide low noise levels. The cab has excellent all-round visibility. The front windshield can easily slide up into the ceiling, and the lower front glass can be removed and stored in the side door.

Integrated air-conditioning and heating system: The pressurized and filtered cab air is supplied by an automatically-controlled fan. The air is distributed throughout the cab from 14 vents.

Ergonomic operator's seat: The adjustable seat and joystick console move independently to accommodate the operator. The seat has nine different adjustments plus a seat belt for the operator's comfort and safety.

## Sound Level

Sound level in cab according to ISO 6396

LpA (standard)	dB(A)	69
----------------	-------	----

LpA (tropical)	dB(A)	70
----------------	-------	----

External sound level according to ISO 6395 and EU Noise Directive (2000/14/EC) and 474-1:2006 +A1:2009

LwA (standard)	dB(A)	100
----------------	-------	-----

LwA (tropical)	dB(A)	101
----------------	-------	-----

# SPECIFICATIONS.

## VOLVO BUCKETS

Loose soil, re-handling material or abrasive rock; excavators and attachments work hand in hand to move almost any type of material. Volvo's experience together with excavator and attachment technology ensures a reduction in cycle times, increased productivity and lower fuel costs through higher breakout forces and quicker bucket fill times.

The efficiency of any type of excavation depends upon the selection of the right bucket therefore a broad bucket offering available from the same retailer as your excavator means the machine can be easily adjusted to operate in any conditions.

As the technology and experience in design for both Volvo's attachments and excavators stems from the same origin, availing from another service like Volvo's aftermarket support ensures the machine is running harder for longer.



### (GP) General purpose bucket

Designed for digging and re-handling soft to medium materials e.g. soils with low wear characteristics, the GP bucket has anti-abrasive side cutters, a hardened lip plate and self-sharpening bucket teeth.

### (HD) Heavy-duty bucket

Intended for digging in dense materials such as hard packed clay and gravel. The HD bucket has heavier overall fabrication with a thicker side cutting edge and hardened plating on all critical ground-engaging areas.

### (RK) Rock bucket

Together with harder and thicker plating on all critical leading edges the rock bucket provides digging performance in soils with a high degree of rock content and well blasted rock.

### (FD) Fixed ditching bucket

A wide face, round profile and drain holes make the FD bucket ideal for ditch cleaning or removal of other soft material. An inner stiffener and optional bolt-on cutting edge bolster performance.

### Volvo quick couplers

Direct fit attachments will always deliver a high performance however with the need for excavators to handle more tasks than ever before, Volvo offer a diverse range of Attachment Quick Couplers providing various levels of versatility and performance to meet every need.

## VOLVO TOOTH SYSTEM



### Self-Sharpening Tooth System Cuts Through the Toughest Jobs

Volvo perfects the excavator bucket's point of attack with a robust tooth system that delivers performance and long life. Cast and tempered from a high-strength alloy, Volvo teeth resist stress and deliver optimum penetration in hard or abrasive material. An innovative design lessens internal wear between tooth and adapter — and makes it easy to change teeth.

#### LOCKING DEVICE

Patented vertical locking device. The steel pin with flexible lock retainer tightly secures the tooth to the adapter. Smart design transfers working stresses away from the locking device, saving wear on the steel pin and extending pin life. Self-sharpening Volvo teeth are designed for a small penetration area, which reduces stress and wear at the point of contact.

#### GPE

Self-sharpening general-purpose tooth with good penetration and long service life.

#### AMRE / ARXE

Tooth with extra-wear metal and longer service life intended for rock and abrasive material. Self sharpening.

#### PPE

Pick-point excavator tooth delivers maximum penetration in hard clay or frozen ground.

#### SNE

Spade nose tooth is designed for finishing work such as leveling, grading, cleaning & backfilling.

#### TPE

Twin pick point with sharp, dual-point profile is ideal for compact or frozen ground.

#### Wear Cap & BLW Adapter

Wear cap protects the adapter from unnecessary wear.

BLW: Bottom leg adapter for wear cap with extra long top leg for welding to both sides of the cutting edge. Long bottom leg.

BL: 1 1/2 bottom leg adapter for welding to both sides of the cutting edge

## MAXIMUM PERMITTED BUCKETS

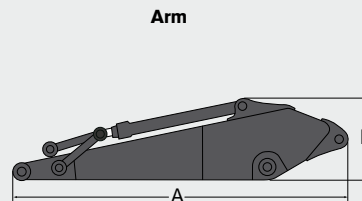
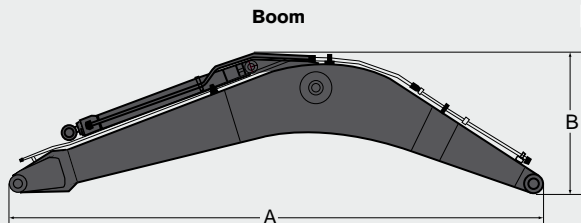
Boom	m	4,6			4,6 2 piece		
Arm	m	2,1	2,5	3,0	2,1	2,5	3,0
Max. bucket	t/m <sup>3</sup>	liter	liter	liter	liter	liter	liter
<b>EC140DL with 600mm shoe 2 450kg counterweight</b>							
<b>Direct Fit</b>							
GP Bucket	1,5	950	800	700	925	800	700
	1,8	825	700	600	825	700	600
<b>Quick Coupler</b>							
GP Bucket	1,5	875	725	625	850	725	625
	1,8	775	650	550	750	625	550
<b>EC140DLM with 700mm shoe 2 450kg counterweight</b>							
<b>Direct Fit</b>							
GP Bucket	1,5	975	800	700	975	800	700
	1,8	850	700	600	850	700	600
<b>Quick Coupler</b>							
GP Bucket	1,5	875	725	625	875	725	625
	1,8	775	625	550	775	625	550

- Note: 1. Bucket size based on ISO 7451, heaped material with a 1:1 angle of repose  
 2. "Max. permitted sizes" are for reference only and are not necessarily available from the factory  
 3. Bucket widths are less than bucket's tip radius.

## MACHINE WEIGHTS AND GROUND PRESSURE

Description	Shoe width mm	4,6m boom 2,5m arm 390kg bucket 2 450kg counterweight			4,6m 2 piece boom 2,5m arm 390kg bucket 2 450kg counterweight		
		Operating weight kg	Ground pressure kPa	Overall width mm	Operating weight kg	Ground pressure kPa	Overall width mm
<b>EC140DL</b>							
Triple grouser	500	13 710	43,1	2 490	14 050	44,1	2 490
	600	13 900	36,3	2 590	14 250	37,3	2 590
	HD 600	13 980	36,3	2 590	14 320	37,3	2 590
	700	14 180	31,4	2 690	14 520	32,4	2 690
	750	14 300	29,4	2 740	14 640	30,4	2 740
Rubber grouser	500	13 740	43,1	2 490	14 090	44,1	2 490
<b>EC140DL with Dozer Blade</b>							
Triple grouser	500	14 640	46,1	2 490	14 990	47,1	2 490
	600	14 840	39,2	2 590	15 190	40,2	2 590
	HD 600	14 910	39,2	2 590	15 260	40,2	2 590
	700	15 110	33,3	2 690	15 460	34,3	2 690
	750	15 230	31,4	2 740	15 580	32,4	2 740
Rubber grouser	500	14 680	46,1	2 490	15 020	47,1	2 490
<b>EC140DLM</b>							
Triple grouser	600	15 010	37,3	2 590	15 360	38,2	2 590
	700	15 220	32,4	2 690	15 570	33,3	2 690
	800	15 620	29,4	2 790	15 970	29,4	2 790
	900	15 870	26,5	2 890	16 210	26,5	2 890

## DIMENSIONS



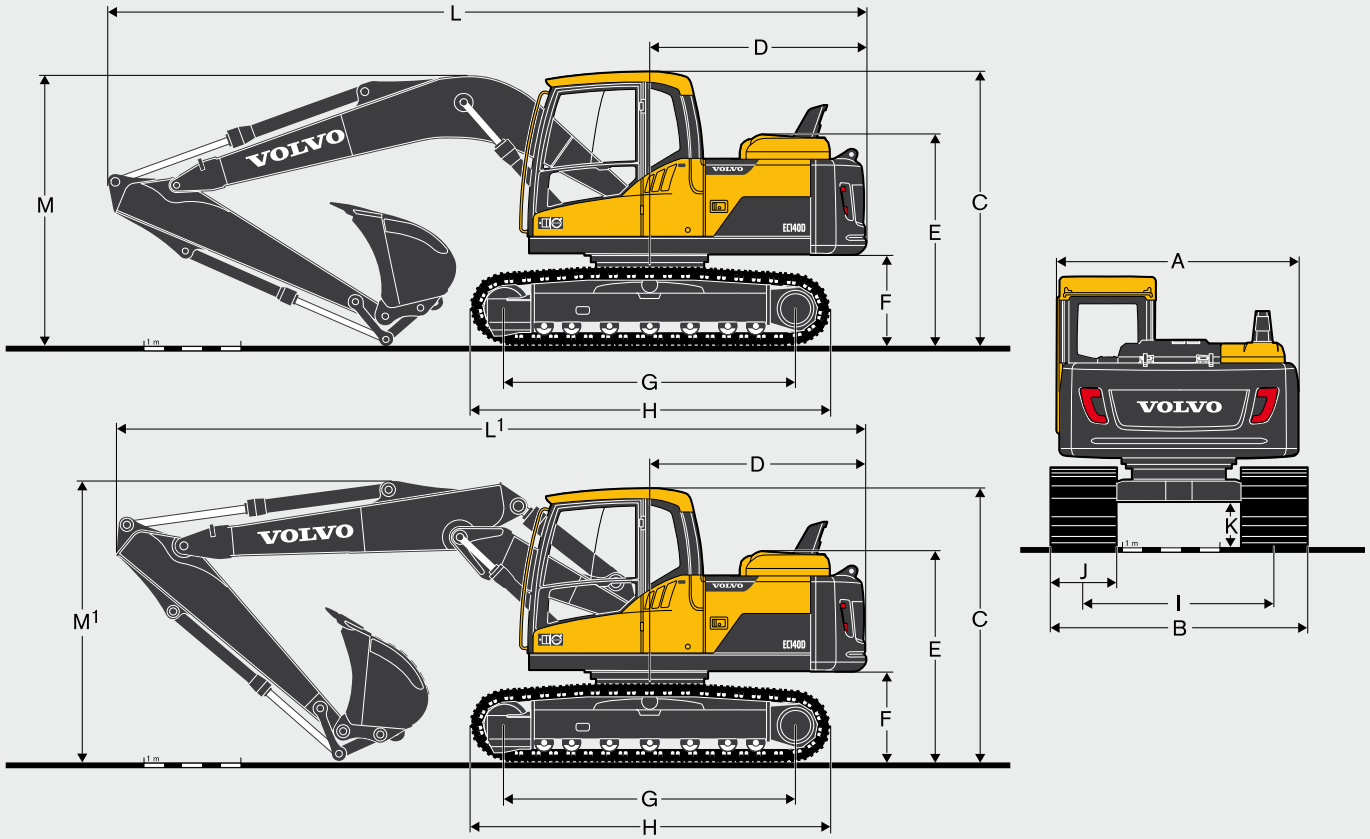
EC140D								
Description	Unit	mono	2-piece	Description	Unit	2,1	2,5	3,0
<b>Boom</b>	<b>m</b>	<b>4,6</b>	<b>4,6</b>	<b>Arm</b>	<b>m</b>	<b>2,1</b>	<b>2,5</b>	<b>3,0</b>
Length (A)	mm	4 770	4 765	Length (A)	mm	2 800	3 200	2 700
Height (B)	mm	1 370	1 225	Height (B)	mm	710	710	780
Width	mm	545	545	Width	mm	300	300	300
Weight	kg	1 100	1 400	Weight	kg	555	625	685

\* Includes cylinder, piping and pin, excludes boom cyl. Pin

\* Includes cylinder, linkage and pin

# SPECIFICATIONS.

## DIMENSIONS

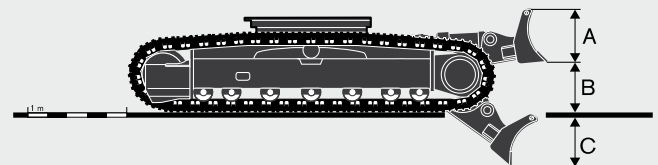


Description		Unit	EC140DL			EC140DLM		
Boom		m	4,6 mono or 4,6 2-piece			4,6 mono or 4,6 2-piece		
Arm		m	2,1	2,5	3,0	2,1	2,5	3,0
A	Overall width of upper structure	mm	2 490	2 490	2 490	2 490	2 490	2 490
B	Overall width	mm	2 590	2 590	2 590	2 690	2 690	2 690
C	Overall height of cab	mm	2 800	2 800	2 800	2 990	2 990	2 990
D	Tail slew radius	mm	2 200	2 200	2 200	2 200	2 200	2 200
E	Overall height of engine hood	mm	2 145	2 145	2 145	2 339	2 339	2 339
F	Counterweight clearance *	mm	920	920	920	1 113	1 113	1 113
G	Tumbler length	mm	3 040	3 040	3 040	3 000	3 000	3 000
H	Track length	mm	3 760	3 760	3 760	3 790	3 790	3 790
I	Track gauge	mm	1 990	1 990	1 990	1 990	1 990	1 990
J	Shoe width	mm	600	600	600	700	700	700
K	Min. ground clearance *	mm	436	436	436	580	580	580
L	Overall length	mm	7 700	7 700	7 580	7 670	7 690	7 650
L <sup>1</sup>	Overall length	mm	7 680	7 620	7 390	7 700	7 670	7 490
M	Overall height of boom	mm	2 710	2 830	3 210	2 780	2 900	3 160
M <sup>1</sup>	Overall height of boom	mm	2 720	2 950	3 350	2 820	2 990	3 370

\* Without shoe grouser / <sup>1</sup> 2-piece boom

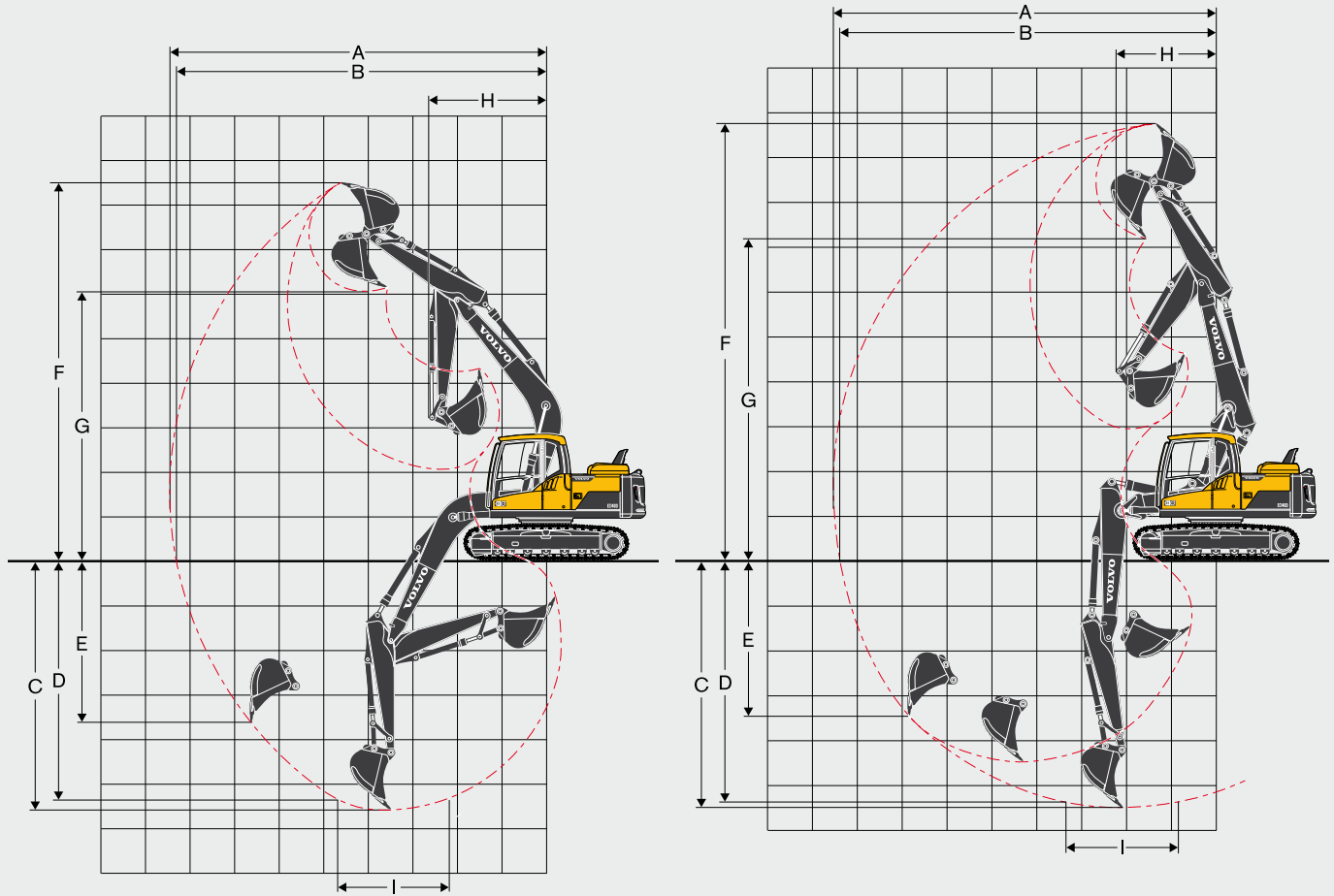
### Front dozer blade

A	Height	mm	585
	Width	mm	2 590
	Weight	kg	458
B	Lift height	mm	478
C	Digging depth	mm	601





## WORKING RANGES



Description		Unit	EC140DL						EC140DLM					
Boom		m	4,6 mono			4,6 2-piece			4,6 mono			4,6 2-piece		
Arm		m	2,1	2,5	3,0	2,1	2,5	3,0	2,1	2,5	3,0	2,1	2,5	3,0
A	Max. digging reach	mm	7 960	8 330	8 820	8 050	8 440	8 930	7 960	8 330	8 820	8 050	8 440	8 930
B	Max. digging reach on ground	mm	7 810	8 190	8 690	7 910	8 300	8 800	7 850	8 230	8 730	7 950	8 340	8 840
C	Max. digging depth	mm	5 130	5 530	6 030	5 060	5 450	5 950	5 320	5 720	6 220	5 250	5 640	6 140
D	Max. digging depth (l = 2440 mm level)	mm	4 880	5 310	5 850	4 930	5 340	5 850	5 070	5 510	6 050	5 120	5 540	6 050
E	Max. vertical wall digging depth	mm	4 580	4 970	5 510	4 290	4 680	5 180	4 780	5 160	5 700	4 490	4 870	5 370
F	Max. cutting height	mm	8 190	8 420	8 770	9 260	9 620	10 090	8 000	8 220	8 580	9 070	9 420	9 900
G	Max. dumping height	mm	5 770	6 010	6 350	6 800	7 160	7 640	5 570	5 820	6 160	6 600	6 970	7 450
H	Min. front swing radius	mm	2 540	2 600	2 830	1 930	2 190	2 620	2 540	2 600	2 830	1 930	2 190	2 620
<b>Digging forces with direct fit bucket</b>														
Bucket radius		mm	1 250	1 250	1 250	1 250	1 250	1 250	1 250	1 250	1 250	1 250	1 250	1 250
Normal		SAE J1179	kN	82,4	82,4	82,4	82,4	82,4	82,4	82,4	82,4	82,4	82,4	82,4
Power boost		SAE J1179	kN	87,3	87,3	87,3	87,3	87,3	87,3	87,3	87,3	87,3	87,3	87,3
Normal		ISO 6015	kN	93,2	93,2	93,2	93,2	93,2	93,2	93,2	93,2	93,2	93,2	93,2
Power boost		ISO 6015	kN	98,1	98,1	98,1	98,1	98,1	98,1	98,1	98,1	98,1	98,1	98,1
Normal		SAE J1179	kN	69,6	61,8	54,9	69,6	61,8	54,9	69,6	61,8	54,9	69,6	61,8
Power boost		SAE J1179	kN	73,5	65,7	58,8	73,5	65,7	58,8	73,5	65,7	58,8	73,5	65,7
Normal		ISO 6015	kN	71,6	63,7	56,9	71,6	63,7	56,9	71,6	63,7	56,9	71,6	63,7
Power boost		ISO 6015	kN	75,5	67,7	59,8	75,5	67,7	59,8	75,5	67,7	59,8	75,5	67,7
Rotation angle, bucket		°	174	174	174	174	174	174	174	174	174	174	174	174

# SPECIFICATIONS.

## LIFTING CAPACITY EC140DL (without dozer blade).

Lifting capacity at the arm end without bucket.

For lifting capacity including bucket, simply subtract actual weight of the direct fit bucket or the bucket with quick coupler from the following values.

	Lifting hook related to ground level	1,5 m		3,0 m		4,5 m		6,0 m		7,5 m		Max. reach		
		Along	Across	Along	Across	Along	Across	Along	Across	Along	Across	Along	Across	Max. m
Boom 4,6m	7,5 m kg													
Arm 2,1m	6,0 m kg					*3 330	*3 330					*3 500	3 460	4,9
Shoe 600mm	4,5 m kg					*3 470	*3 470					*3 560	2 500	6,0
CWT 2 450kg	3,0 m kg			*6 230	*6 230	*4 330	3 740	3 720	2 430			3 250	2 130	6,5
	1,5 m kg					*5 380	3 530	3 630	2 350			3 070	1 990	6,7
	0 m kg			*5 400	*5 400	*5 470	3 390	3 550	2 280			3 150	2 030	6,5
	-1,5 m kg	*5 010	*5 010	*9 430	6 140	5 420	3 350					3 560	2 290	6,0
	-3,0 m kg			*8 200	6 260	*5 460	3 410					*4 830	3 050	4,9
	-4,5 m kg													
Boom 4,6m	7,5 m kg													
Arm 2,5m	6,0 m kg					*2 840	*2 840					*3 200	2 980	5,4
Shoe 600mm	4,5 m kg					*3 080	*3 080	*3 190	2 510			*3 220	2 250	6,4
CWT 2 450kg	3,0 m kg			*5 330	*5 330	*3 950	3 780	*3 480	2 440			2 980	1 950	6,9
	1,5 m kg			*6 560	6 400	*5 070	3 540	3 630	2 350			2 820	1 830	7,1
	0 m kg			*6 020	*6 020	5 460	3 380	3 540	2 270			2 880	1 860	6,9
	-1,5 m kg	*4 590	*4 590	*9 600	6 080	5 380	3 310	3 500	2 230			3 210	2 060	6,4
	-3,0 m kg	*8 970	*8 970	*8 670	6 160	5 420	3 340					4 130	2 620	5,4
	-4,5 m kg													
Boom 4,6m	7,5 m kg											*2 860	*2 860	4,5
Arm 3,0m	6,0 m kg							*2 860	2 540			*2 840	2 520	6,0
Shoe 600mm	4,5 m kg							*2 770	2 540			*2 660	1 980	6,9
CWT 2 450kg	3,0 m kg					*3 440	*3 440	*3 130	2 460			*2 660	1 740	7,4
	1,5 m kg			*7 320	6 560	*4 620	3 580	3 640	2 350	2 580	1 660	2 540	1 640	7,6
	0 m kg			*6 500	6 130	5 470	3 370	3 530	2 250			2 580	1 650	7,4
	-1,5 m kg	*3 970	*3 970	*8 740	6 020	5 360	3 270	3 470	2 190			2 820	1 800	6,9
	-3,0 m kg	*7 350	*7 350	*9 070	6 060	5 360	3 270	3 490	2 210			3 460	2 200	6,0
	-4,5 m kg			*7 190	6 260							*4 490	3 440	4,5
Boom 4,6m	7,5 m kg											*5 580	*5 580	2,9
2piece	6,0 m kg			*5 070	*5 070	*4 780	4 010					*3 980	3 320	5,0
Arm 2,1m	4,5 m kg			*5 460	*5 460	*4 920	3 960	3 800	2 480			*3 580	2 420	6,1
Shoe 600mm	3,0 m kg					*5 710	3 750	3 750	2 430			3 190	2 060	6,6
CWT 2 450kg	1,5 m kg					5 660	3 510	3 650	2 330			3 020	1 940	6,8
	0 m kg					5 490	3 360	3 570	2 260			3 100	1 980	6,6
	-1,5 m kg			*9 220	6 100	5 440	3 320	3 560	2 260			3 500	2 220	6,1
	-3,0 m kg													
	-4,5 m kg													
Boom 4,6m	7,5 m kg			*5 170	*5 170							*4 140	*4 140	3,7
2-piece	6,0 m kg			*4 380	*4 380	*4 300	4 090					*3 200	2 870	5,5
Arm 2,5m	4,5 m kg			*4 120	*4 120	*4 540	4 010	3 860	2 520			*2 920	2 180	6,5
Shoe 600mm	3,0 m kg			*7 570	7 170	*5 370	3 800	3 780	2 450			*2 860	1 890	7,0
CWT 2 450kg	1,5 m kg					5 720	3 550	3 660	2 340			2 780	1 780	7,2
	0 m kg			*5 440	*5 440	5 510	3 370	3 570	2 260			2 840	1 810	7,0
	-1,5 m kg			*9 170	6 070	5 430	3 300	3 530	2 220			3 160	2 000	6,5
	-3,0 m kg					*5 370	3 340							5,5
	-4,5 m kg													
Boom 4,6m	7,5 m kg			*4 110	*4 110	*3 600	*3 600					*3 230	*3 230	4,6
2-piece	6,0 m kg					*3 740	*3 740	*3 140	2 540			*2 640	2 410	6,2
Arm 3,0m	4,5 m kg			*2 980	*2 980	*3 760	*3 760	*3 830	2 540			*2 430	1 910	7,1
Shoe 600mm	3,0 m kg					*4 870	3 850	3 780	2 460	*2 530	1 690	*2 380	1 670	7,5
CWT 2 450kg	1,5 m kg					5 730	3 570	3 650	2 330	2 580	1 650	*2 450	1 580	7,7
	0 m kg					5 480	3 350	3 530	2 230	2 540	1 610	2 520	1 600	7,5
	-1,5 m kg	*3 610	*3 610	*8 250	5 970	5 350	3 240	3 460	2 170			2 760	1 740	7,1
	-3,0 m kg			*8 630	6 020	5 360	3 250	3 490	2 200			3 360	2 120	6,2
	-4,5 m kg													

Notes: 1. Machine in "Fine Mode-F" (Power Boost) for lifting capacities. 2. The above loads are in compliance with SAE J1097 and ISO 10567 Hydraulic Excavator Lifting Capacity Standards. 3. Rated loads do not exceed 87% of hydraulic lifting capacity or 75% of tipping load. 4. Rated loads marked with an asterisk (\*) are limited by hydraulic capacity rather than tipping load.

## LIFTING CAPACITY EC140DL (with dozer blade).

Lifting capacity at the arm end without bucket.

For lifting capacity including bucket, simply subtract actual weight of the direct fit bucket or the bucket with quick coupler from the following values.

	Lifting hook related to ground level	1,5 m		3,0 m		4,5 m		6,0 m		7,5 m		Max. reach		
		Along	Across	Along	Across	Along	Across	Along	Across	Along	Across	Along	Across	Max. m
Boom 4,6m	7,5 m kg													
Arm 2,1m	6,0 m kg					*3 330	*3 330					*3 500	*3 500	4,9
Shoe 600mm	4,5 m kg					*3 470	*3 470					*3 560	2 870	6,0
CWT 2 450kg	3,0 m kg			*6 230	*6 230	*4 330	4 290	*3 750	2 800			*3 710	2 450	6,5
	1,5 m kg					*5 380	4 070	*4 170	2 710			*3 900	2 310	6,7
	0 m kg			*5 400	*5 400	*6 090	3 930	*4 510	2 650			*4 160	2 360	6,5
	-1,5 m kg	*5 010	*5 010	*9 430	7 220	*6 220	3 890					*4 470	2 650	6,0
	-3,0 m kg			*8 200	7 340	*5 460	3 960					*4 830	3 530	4,9
	-4,5 m kg													
Boom 4,6m	7,5 m kg													
Arm 2,5m	6,0 m kg					*2 840	*2 840					*3 200	*3 200	5,4
Shoe 600mm	4,5 m kg					*3 080	*3 080	*3 190	2 880			*3 220	2 590	6,4
CWT 2 450kg	3,0 m kg			*5 330	*5 330	*3 950	*3 950	*3 480	2 810			*3 220	2 250	6,9
	1,5 m kg			*6 560	*6 560	*5 070	4 090	*3 970	2 710			*3 410	2 120	7,1
	0 m kg			*6 020	*6 020	*5 920	3 920	*4 390	2 630			*3 830	2 160	6,9
	-1,5 m kg	*4 590	*4 590	*9 600	7 150	*6 210	3 860	*4 510	2 600			*4 160	2 390	6,4
	-3,0 m kg	*8 970	*8 970	*8 670	7 240	*5 760	3 890					*4 520	3 040	5,4
	-4,5 m kg													
Boom 4,6m	7,5 m kg											*2 860	*2 860	4,5
Arm 3,0m	6,0 m kg							*2 860	*2 860			*2 840	*2 840	6,0
Shoe 600mm	4,5 m kg							*2 770	*2 770			*2 660	2 270	6,9
CWT 2 450kg	3,0 m kg					*3 440	*3 440	*3 130	2 810			*2 660	2 000	7,4
	1,5 m kg			*7 320	*7 320	*4 620	4 110	*3 680	2 700	*3 100	1 930	*2 790	1 900	7,6
	0 m kg			*6 500	*6 500	*5 610	3 900	*4 180	2 600			*3 080	1 920	7,4
	-1,5 m kg	*3 970	*3 970	*8 740	7 060	*6 100	3 800	*4 450	2 540			*3 650	2 090	6,9
	-3,0 m kg	*7 350	*7 350	*9 070	7 100	*5 940	3 800	*4 150	2 570			*4 100	2 550	6,0
	-4,5 m kg			*7 190	*7 190							*4 490	3 980	4,5
Boom 4,6m	7,5 m kg											*5 580	*5 580	2,9
2piece	6,0 m kg			*5 070	*5 070	*4 800	4 670					*3 980	3 880	5,0
Arm 2,1m	4,5 m kg			*5 460	*5 460	*4 940	4 610	*4 090	2 910			*3 580	2 850	6,1
Shoe 600mm	3,0 m kg					*5 730	4 410	*4 690	2 860			*3 510	2 450	6,6
CWT 2 450kg	1,5 m kg					*6 590	4 170	*4 980	2 770			*3 640	2 310	6,8
	0 m kg					*6 930	4 020	*5 050	2 700			*4 040	2 360	6,6
	-1,5 m kg			*9 280	7 420	*6 470	3 980	*4 430	2 690			*4 290	2 650	6,1
	-3,0 m kg													
	-4,5 m kg													
Boom 4,6m	7,5 m kg			*5 190	*5 190							*4 160	*4 160	3,7
2-piece	6,0 m kg			*4 390	*4 390	*4 320	*4 320					*3 220	*3 220	5,5
Arm 2,5m	4,5 m kg			*4 140	*4 140	*4 560	4 540	*4 220	2 880			*2 930	2 500	6,5
Shoe 600mm	3,0 m kg			*7 600	*7 600	*5 390	4 330	*4 470	2 800			*2 870	2 180	7,0
CWT 2 450kg	1,5 m kg					*6 350	4 080	*4 840	2 700			*2 970	2 060	7,2
	0 m kg			*5 460	*5 460	*6 870	3 900	*5 030	2 610			*3 260	2 100	7,0
	-1,5 m kg			*9 180	7 100	*6 640	3 830	*4 730	2 580			*3 850	2 320	6,5
	-3,0 m kg					*5 400	3 870							5,5
	-4,5 m kg													
Boom 4,6m	7,5 m kg			*4 120	*4 120	*3 600	*3 600					*3 240	*3 240	4,6
2-piece	6,0 m kg					*3 750	*3 750	*3 150	2 900			*2 640	*2 640	6,2
Arm 3,0m	4,5 m kg			*2 980	*2 980	*3 760	*3 760	*3 840	2 900			*2 430	2 190	7,1
Shoe 600mm	3,0 m kg					*4 880	4 390	*4 170	2 810	*2 540	1 950	*2 380	1 940	7,5
CWT 2 450kg	1,5 m kg					*5 970	4 100	*4 610	2 690	*3 320	1 910	*2 450	1 840	7,7
	0 m kg					*6 700	3 880	*4 930	2 580	*2 860	1 870	*2 650	1 860	7,5
	-1,5 m kg	*3 620	*3 620	*8 260	7 010	*6 740	3 770	*4 860	2 520			*3 050	2 030	7,1
	-3,0 m kg			*8 650	7 060	*5 890	3 780	*3 890	2 550			*3 570	2 460	6,2
	-4,5 m kg													

Notes: 1. Machine in "Fine Mode-F" (Power Boost) for lifting capacities. 2. The above loads are in compliance with SAE J1097 and ISO 10567 Hydraulic Excavator Lifting Capacity Standards. 3. Rated loads do not exceed 87% of hydraulic lifting capacity or 75% of tipping load. 4. Rated loads marked with an asterisk (\*) are limited by hydraulic capacity rather than tipping load.

# SPECIFICATIONS.

## LIFTING CAPACITY EC140DL (with dozer blade).

Lifting capacity at the arm end without bucket.

For lifting capacity including bucket, simply subtract actual weight of the direct fit bucket or the bucket with quick coupler from the following values.

	Lifting hook related to ground level	1,5 m		3,0 m		4,5 m		6,0 m		7,5 m		Max. reach		
		Along	Across	Along	Across	Along	Across	Along	Across	Along	Across	Along	Across	Max. m
Boom 4,6m	7,5 m kg													
Arm 2,1m	6,0 m kg					*3 330	*3 330					*3 500	*3 500	4,9
Shoe 500mm	4,5 m kg					*3 470	*3 470					*3 560	2 820	6,0
CWT 2 450kg	3,0 m kg			*6 230	*6 230	*4 330	4 230	*3 750	2 750			*3 710	2 410	6,5
Dozer Blade Down	1,5 m kg					*5 380	4 010	*4 170	2 670			*3 900	2 270	6,7
	0 m kg			*5 400	*5 400	*6 090	3 860	*4 510	2 600			*4 160	2 320	6,5
	-1,5 m kg	*5 010	*5 010	*9 430	7 100	*6 220	3 820					*4 470	2 600	6,0
	-3,0 m kg			*8 200	7 220	*5 460	3 890					*4 830	3 470	4,9
	-4,5 m kg													
Boom 4,6m	7,5 m kg													
Arm 2,5m	6,0 m kg					*2 840	*2 840					*3 200	*3 200	5,4
Shoe 500mm	4,5 m kg					*3 080	*3 080	*3 190	2 830			*3 220	2 550	6,4
CWT 2 450kg	3,0 m kg			*5 330	*5 330	*3 950	*3 950	*3 480	2 760			*3 220	2 210	6,9
Dozer Blade Down	1,5 m kg			*6 560	*6 560	*5 070	4 030	*3 970	2 670			*3 410	2 090	7,1
	0 m kg			*6 020	*6 020	*5 920	3 860	*4 390	2 580			*3 830	2 120	6,9
	-1,5 m kg	*4 590	*4 590	*9 600	7 030	*6 210	3 790	*4 510	2 550			*4 160	2 350	6,4
	-3,0 m kg	*8 970	*8 970	*8 670	7 120	*5 760	3 820					*4 520	2 980	5,4
	-4,5 m kg													
Boom 4,6m	7,5 m kg											*2 860	*2 860	4,5
Arm 3,0m	6,0 m kg							*2 860	2 850			*2 840	2 820	6,0
Shoe 500mm	4,5 m kg							*2 770	*2 770			*2 660	2 230	6,9
CWT 2 450kg	3,0 m kg					*3 440	*3 440	*3 130	2 770			*2 660	1 970	7,4
Dozer Blade Down	1,5 m kg			*7 320	*7 320	*4 620	4 050	*3 680	2 650	*3 100	1 890	*2 790	1 860	7,6
	0 m kg			*6 500	*6 500	*5 610	3 840	*4 180	2 550			*3 080	1 880	7,4
	-1,5 m kg	*3 970	*3 970	*8 740	6 940	*6 100	3 730	*4 450	2 500			*3 650	2 050	6,9
	-3,0 m kg	*7 350	*7 350	*9 070	6 980	*5 940	3 730	*4 150	2 520			*4 100	2 500	6,0
	-4,5 m kg			*7 190	7 190							*4 490	3 910	4,5
Boom 4,6m	7,5 m kg											*5 580	*5 580	2,9
2-piece	6,0 m kg			*5 070	*5 070	*4 800	4 480					*3 980	3 720	5,0
Arm 2,1m	4,5 m kg			*5 460	*5 460	*4 940	4 430	*4 090	2 790			*3 580	2 730	6,1
Shoe 500mm	3,0 m kg					*5 730	4 220	*4 690	2 740			*3 510	2 340	6,6
CWT 2 450kg	1,5 m kg					*6 590	3 990	*4 980	2 650			*3 640	2 210	6,8
Dozer Blade Down	0 m kg					*6 930	3 840	*5 050	2 580			*4 040	2 250	6,6
	-1,5 m kg			*9 280	7 050	*6 470	3 800	*4 430	2 570			*4 290	2 530	6,1
	-3,0 m kg													
	-4,5 m kg													
Boom 4,6m	7,5 m kg			*5 190	*5 190							*4 160	*4 160	3,7
2-piece	6,0 m kg			*4 390	*4 390	*4 320	*4 320					*3 220	3 210	5,5
Arm 2,5m	4,5 m kg			*4 140	*4 140	*4 560	4 480	*4 220	2 830			*2 930	2 460	6,5
Shoe 500mm	3,0 m kg			*7 600	*7 600	*5 390	4 270	*4 470	2 760			*2 870	2 140	7,0
CWT 2 450kg	1,5 m kg					*6 350	4 010	*4 840	2 650			*2 970	2 030	7,2
Dozer Blade Down	0 m kg			*5 460	*5 460	*6 870	3 830	*5 030	2 560			*3 260	2 060	7,0
	-1,5 m kg			*9 180	6 980	*6 640	3 760	*4 730	2 530			*3 850	2 280	6,5
	-3,0 m kg					*5 400	3 800							5,5
	-4,5 m kg													
Boom 4,6m	7,5 m kg			*4 120	*4 120	*3 600	*3 600					*3 240	*3 240	4,6
2-piece	6,0 m kg					*3 750	*3 750	*3 150	2 850			*2 640	*2 640	6,2
Arm 3,0m	4,5 m kg			*2 980	*2 980	*3 760	*3 760	*3 840	2 850			*2 430	2 160	7,1
Shoe 500mm	3,0 m kg					*4 880	4 320	*4 170	2 760	*2 540	1 920	*2 380	1 900	7,5
CWT 2 450kg	1,5 m kg					*5 970	4 040	*4 610	2 640	*3 320	1 880	*2 450	1 810	7,7
Dozer Blade Down	0 m kg					*6 700	3 810	*4 930	2 530	*2 860	1 840	*2 650	1 830	7,5
	-1,5 m kg	*3 620	*3 620	*8 260	6 890	*6 740	3 710	*4 860	2 480			*3 050	1 990	7,1
	-3,0 m kg			*8 650	6 940	*5 890	3 710	*3 890	2 500			*3 570	2 420	6,2
	-4,5 m kg													

Notes: 1. Machine in "Fine Mode-F" (Power Boost) for lifting capacities. 2. The above loads are in compliance with SAE J1097 and ISO 10567 Hydraulic Excavator Lifting Capacity Standards. 3. Rated loads do not exceed 87% of hydraulic lifting capacity or 75% of tipping load. 4. Rated loads marked with an asterisk (\*) are limited by hydraulic capacity rather than tipping load.

### LIFTING CAPACITY EC140DLM (without dozer blade).

Lifting capacity at the arm end without bucket.

For lifting capacity including bucket, simply subtract actual weight of the direct fit bucket or the bucket with quick coupler from the following values.

	Lifting hook related to ground level	1,5 m		3,0 m		4,5 m		6,0 m		7,5 m		Max. reach		
		Along	Across	Along	Across	Along	Across	Along	Across	Along	Across	Along	Across	Max. m
Boom 4,6m	7,5 m kg													
Arm 2,1m	6,0 m kg					*3 280	*3 280					*3 500	*3 500	5,1
Shoe 700mm	4,5 m kg					*3 560	*3 560	*3 560	2 730			*3 580	2 680	6,1
CWT 2 450kg	3,0 m kg			*6 660	*6 660	*4 460	4 080	*3 800	2 680			3 550	2 330	6,6
	1,5 m kg					*5 500	3 870	4 000	2 590			3 390	2 210	6,7
	0 m kg			*5 910	*5 910	6 010	3 740	3 930	2 530			3 520	2 280	6,5
	-1,5 m kg	*5 670	*5 670	*9 330	6 800	5 980	3 710					4 050	2 610	5,9
	-3,0 m kg			*7 940	6 930	*5 220	3 800					*4 880	3 580	4,7
	-4,5 m kg													
Boom 4,6m	7,5 m kg													
Arm 2,5m	6,0 m kg					*2 820	*2 820					*3 200	3 120	5,6
Shoe 700mm	4,5 m kg					*3 160	*3 160	*3 210	2 760			*3 200	2 430	6,5
CWT 2 450kg	3,0 m kg			*5 740	*5 740	*4 090	*4 090	*3 540	2 690			*3 230	2 140	7,0
	1,5 m kg			*5 940	*5 940	*5 200	3 880	3 990	2 590			3 130	2 040	7,1
	0 m kg			*6 340	*6 340	*5 990	3 730	3 910	2 510			3 220	2 090	6,9
	-1,5 m kg	*5 090	*5 090	*9 530	6 730	5 940	3 670	3 890	2 490			3 640	2 340	6,3
	-3,0 m kg	*9 690	*9 690	*8 460	6 830	*5 620	3 720					*4 570	3 050	5,2
	-4,5 m kg													
Boom 4,6m	7,5 m kg											*2 850	*2 850	4,7
Arm 3,0m	6,0 m kg											*2 800	2 650	6,2
Shoe 700mm	4,5 m kg							*2 800	2 780			*2 650	2 140	7,0
CWT 2 450kg	3,0 m kg			*4 600	*4 600	*3 580	*3 580	*3 200	2 690			*2 670	1 900	7,5
	1,5 m kg			*7 670	7 100	*4 770	3 900	*3 750	2 570	2 850	1 840	2 810	1 820	7,6
	0 m kg			*6 620	*6 620	*5 710	3 700	3 880	2 480			2 880	1 850	7,4
	-1,5 m kg	*4 360	*4 360	*9 230	6 630	5 880	3 620	3 830	2 430			3 180	2 040	6,8
	-3,0 m kg	*7 890	*7 890	*8 920	6 690	*5 860	3 630					3 970	2 530	5,9
	-4,5 m kg			*6 760	*6 760									4,2
Boom 4,6m	7,5 m kg			*5 890	*5 890							*5 170	*5 170	3,3
2-piece	6,0 m kg			*5 080	*5 080	*4 740	4 360					*3 900	3 420	5,2
Arm 2,1m	4,5 m kg			*5 730	*5 730	*5 000	4 270	4 150	2 710			*3 560	2 580	6,2
Shoe 700mm	3,0 m kg					*5 830	4 060	4 080	2 650			3 460	2 240	6,7
CWT 2 450kg	1,5 m kg					6 140	3 820	3 980	2 560			3 310	2 140	6,8
	0 m kg					5 980	3 690	3 910	2 490			3 430	2 200	6,6
	-1,5 m kg			*9 000	6 710	5 950	3 660					3 940	2 510	6,0
	-3,0 m kg													
	-4,5 m kg													
Boom 4,6m	7,5 m kg			*4 950	*4 950							*3 940	*3 940	4,1
2-piece	6,0 m kg			*4 300	*4 300	*4 290	*4 290					*3 160	2 980	5,7
Arm 2,5m	4,5 m kg			*4 240	*4 240	*4 620	4 330	4 190	2 750			*2 910	2 340	6,6
Shoe 700mm	3,0 m kg					*5 490	4 100	4 100	2 660			*2 880	2 060	7,1
CWT 2 450kg	1,5 m kg					6 170	3 840	3 980	2 560			*3 000	1 960	7,2
	0 m kg			*5 780	*5 780	5 970	3 670	3 890	2 470			3 140	2 010	7,0
	-1,5 m kg			*9 560	6 640	5 910	3 620	3 870	2 450			3 540	2 260	6,4
	-3,0 m kg													
	-4,5 m kg													
Boom 4,6m	9,0m kg											*6 120	*6 120	1,7
2-piece	7,5 m kg					*3 850	*3 850					*3 110	*3 110	4,9
Arm 3,0m	6,0 m kg					*3 740	*3 740	*3 370	2 780			*2 600	2 530	6,3
Shoe 700mm	4,5 m kg			*3 000	*3 000	*3 810	*3 810	*3 850	2 770			*2 420	2 050	7,1
CWT 2 450kg	3,0 m kg					*5 020	4 150	4 110	2 670	*2 710	1 860	*2 390	1 830	7,6
	1,5 m kg					*6 070	3 860	3 980	2 550	2 840	1 820	*2 470	1 750	7,7
	0 m kg			*6 040	*6 040	5 960	3 650	3 860	2 440			*2 690	1 780	7,5
	-1,5 m kg	*4 000	*4 000	*8 760	6 530	5 850	3 560	3 810	2 390			3 100	1 970	7,0
	-3,0 m kg			*8 290	6 610	*5 660	3 580							6,0
	-4,5 m kg													

Notes: 1. Machine in "Fine Mode-F" (Power Boost) for lifting capacities. 2. The above loads are in compliance with SAE J1097 and ISO 10567 Hydraulic Excavator Lifting Capacity Standards. 3. Rated loads do not exceed 87% of hydraulic lifting capacity or 75% of tipping load. 4. Rated loads marked with an asterisk (\*) are limited by hydraulic capacity rather than tipping load.

# EQUIPMENT.

## STANDARD EQUIPMENT

### Engine

Turbocharged, 4 stroke diesel engine with water cooling, direct injection and charged air cooler that meets Tier 4i EU (Stage IIIB) requirements

Air filter with indicator

Air intake heater

Cyclone pre-cleaner

Electric engine shut-off

Fuel filter and water separator

Fuel filler pump: 35 l/min

Alternator, 110 A

Standard cooling system by fan clutch (40 deg. C)

### Electric/Electronic control system

Contronics

Advanced mode control system

Self-diagnostic system

Machine status indication

Engine speed sensing power control

Automatic idling system

One-touch power boost

Safety stop/start function

Adjustable LCD color monitor

Master electrical disconnect switch

Engine restart prevention circuit

High-capacity halogen lights:

Frame-mounted 2

Boom-mounted 2

Batteries, 2 x 12 V / 100 Ah

Start motor, 24 V / 5,5 kW

Caretrack GSM/GPS

3yr-Caretrack subscription\_GSM

### Hydraulic system

Hose rupture valve: boom

Overload warning device

Automatic sensing hydraulic system

Summation system

Boom priority

Arm priority

Swing priority

"ECO" mode fuel saving technology

Boom, arm and bucket regeneration valves

Swing anti-rebound valves

Boom and arm holding valves

Multi-stage filtering system

Cylinder cushioning

Cylinder contamination seals

Auxiliary hydraulic valve

Automatic two-speed travel motors

Longlife Hyd oil mineral 46

### Frame

Access way with handrail

Tool storage area

Punched metal anti-slip plates

Undercover (heavy-duty)

Full height counterweight: 2450 kg - Long Crawler (L), Long Crawler Marsh (LM)

### Cab and interior

ROPS (ISO12117-2) certified cab

Silicon oil and rubber mounts with spring

Travel pedals and hand levers

Adjustable operator seat with heater and joystick control console

Control joysticks with 4 switches each

Heater & air-conditioner, automatic

Flexible antenna

AM/FM stereo with CD player and MP3 input

Hydraulic safety lock lever

Cab, all-weather sound suppressed, includes:

Cup holders

Door locks

Tinted glass

Floor mat

Horn

Large storage area

Pull-up type front window

Removable lower windshield

Seat belt

Safety glass

Sun screens, front, roof, rear

Rain shield

Windshield wiper with intermittent feature

Rear view camera

Master key

### Undercarriage

Undercover (heavy-duty)

Hydraulic track adjusters

Greased and sealed track link

Track Guard

### Digging equipment

Boom: 4,6 m monoblock

Arm: 2,5 m

Linkage

Manual centralized lubrication

## OPTIONAL EQUIPMENT

### Engine

- Block heater: 120 V, 240 V
- Diesel coolant heater, 5 kW
- Water separator with heater
- Auto engine shutdown
- Tropical cooling system (50 deg. C)

### Electric

- Extra work lights:
  - Cab-mounted 3
  - Counterweight-mounted 1
- Travel alarm
- Anti-theft system
- Rotating warning beacon

### Hydraulic system

- Hose rupture valve: arm
- Boom float function with HRV
- Boom float function without HRV
- Hydraulic piping:
  - Work tool management system (up to 20 programmable memories)
  - Hammer & shear, 1 and 2 pump flow
  - Hammer & shear: variable flow and pressure pre-setting
  - Additional return filter
  - Slope & rotator (40lpm or 60lpm)
  - Grapple
  - Oil leak (drain) line
  - Quick coupler piping
- Volvo hydraulic quick coupler S6
- Volvo hydraulic quick coupler U14
- Hydraulic oil, biodegradable 46
- Hydraulic oil, longlife oil 32
- Hydraulic oil, longlife oil 68

### Frame

- Full height counterweight: 2100 kg - Long Crawler (L)

### Cab and interior

- Fabric seat without heater
- Fabric seat with heater and air suspension
- Openable roof hatch
- Cab-mounted falling object guard (FOG)
- Pilot control pattern change
- Cab-mounted falling object protective structure (FOPS)
- Smoker kit (ashtray and lighter)
- Safety net for front window
- Lower wiper with intermittent control
- Anti-vandalism kit
- Specific key

### Undercarriage

- Dozer blade
- Full track guard

### Track shoes

- EC140DL: 500/600/600HD/700HD/750 mm with triple grousers and 500 mm with rubber grouser
- EC140DLM: 600/700/800/900 mm with triple grousers

### Digging equipment

- Boom: 4,6 m 2 piece boom
- Arm: 2,1 m; 3,0 m
- Linkage with lifting eye

### Service

- Tool kit, daily maintenance
- Tool kit, full scale

## SELECTION OF VOLVO OPTIONAL EQUIPMENT

Auto engine shutdown



Boom float



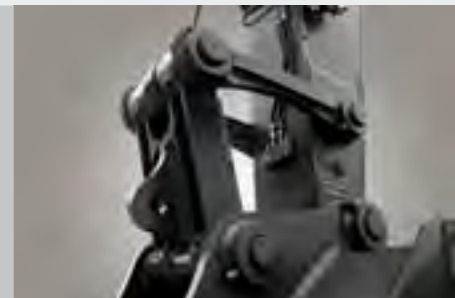
Dozer blade



X3



Lifting eye



FOG

