



Volvo Construction Equipment

# A60H

Volvo Articulated Haulers 55 t 673 hp



# Pure uptime

Get continuous production with this bigger, durable and superior machine – always available and ready to work. Count on superb reliability thanks to the machine's robust design, easy service access and outstanding Volvo dealer network. Guarantee pure uptime.

## Guaranteed durability

Increase your uptime using heavy-duty front and rear frames, hitch and wet disk brakes. Volvo proven durability and the support of extensive warranty options means you never need to worry about getting the job done. Strength and durability are hallmarks of the Volvo articulated hauler.



## Fifty years strong

Fifty years and fifty tonnes later, Volvo is the world's leading manufacturer of articulated haulers. We invented the concept and have been developing and building these machines for over 50 years – it has come a long way from its original 10 tonne articulated hauler. With proven success over the years, the machines include innovative technology and the renowned Volvo engine.



## Service access

With industry-leading access, servicing your machine is quick and easy. The front grill swings down, opening a service platform with anti-slip steps. The electric hood opens to 90 degrees, allowing full and safe access to the engine compartment.



## Volvo dealer network

The exclusive Volvo dealer network is there to support you whenever you need it. Volvo offers a number of services, local knowledge and global experience, including telematics machine monitoring – CareTrack™ and MATRIS™ – as well as superb parts availability.







# UPTIME



Get ready to work with the all new A60H. Designed for heavy hauling in severe off-road operation, the machine's long service life, quality, reliability and durability is everything you expect from a Volvo. Hauling is easier and more efficient.





# PROFITABILITY



Reduce cost per tonne with a higher payload. The state-of-the-art design allows for more capacity while improving fuel efficiency so you can move more for less.

# Move more, make more

Increase your business's profitability by moving more for less. Industry-leading fuel efficiency, innovative technology and vital operational data tools help to optimize production and control your maintenance costs, maximising your return on investment.

## Fuel efficiency guarantee

The A60H, powered by the world-renowned Volvo engine, delivers excellent fuel efficiency without compromising on power or performance. With guaranteed fuel efficiency, this machine will increase your profitability and improve your return on investment.



## Maximise your investment

Meet your targets faster with the A60H. Increase your earnings with a higher payload and greater productivity for lower cost per tonne.



## Control your maintenance costs

The range of Customer Support Agreements offer preventive maintenance, total repairs and a number of uptime services. Volvo uses the latest technology to monitor machine operation and status, giving you advice to increase your profitability. By having a Customer Support Agreement you are in control of your service costs.



## Operational data

Receive valuable data to improve onsite efficiency and save costs. With intelligent systems from Volvo such as MATRIS™, CareTrack™ and the On Board Weighing system, you will optimize your production and minimise your operational costs.





# Bigger and bolder

Achieve astounding productivity with the A60H. This machine is the ultimate hauler, featuring 100% off-road performance, proven Volvo technology and impressive payload – contributing to sustainable operations, year after year.

## Articulated hauler concept

Go where others can't. The A60H embodies the full articulated hauler concept and provides total versatility so you can access the entire jobsite and climb steeper gradients. Work in all seasons, terrains and applications using tailored machine configurations and tires, optimized for this 60 tonne machine.



## The best articulated hauler

The ground-breaking A60H is the best articulated hauler on the market and the latest innovation from Volvo. With matched drivetrain, automatic drive combinations including 100% differential locks, all-terrain bogie, hydro-mechanical steering and active suspension, this machine is unbeatable.



## Comfort at speed

A60H is fitted with active hydraulic front suspension – permitting high hauling speeds in tough conditions. This optimizes operator comfort and stability during travel. Move more material in a shorter time for unmatched productivity.



## Load optimization

The On Board Weighing System guarantees the optimal load every cycle. This maximizes production, boosts fuel efficiency and reduces machine wear in all site conditions and operations.





# PRODUCTIVITY



The A60H can move more tonnes per hour and give a 100% in all conditions. The largest articulated hauler on the market has a bigger payload for your application, delivering up to 40% more productivity.



# Simply the best and the biggest

## PROFITABILITY



The state-of-the-art design allows for more capacity while improving fuel efficiency so you can move more for less.

## Fifty years strong

Fifty years and fifty tonnes later, Volvo is the world's leading manufacturer of articulated haulers.

## Guaranteed durability

Increase your uptime using heavy-duty front and rear frames, hitch and wet disk brakes.

## The best articulated hauler

The ground-breaking A60H is the best articulated hauler on the market and the latest innovation from Volvo.

## Maximise your investment

Mention Volvo engine and suspension within other messages.

## PRODUCTIVITY



The A60H can move more tonnes per hour and give a 100% in all conditions.







### Load optimization

The On Board Weighing System guarantees the optimal load every cycle.

### OPERATOR'S CHOICE



Its comfortable cab and ease of operation, even in adverse conditions, makes operators choose this machine.

### Fuel efficiency guarantee

The A60H is powered by the world-renowned Volvo engine delivers excellent fuel efficiency without compromising on power or performance.

### Service access

With industry-leading access, servicing your machine is quick and easy.

### UPTIME



Designed for heavy hauling in severe off-road operation, its long service life, quality, reliability and durability is everything you expect from a Volvo.

### Articulated hauler concept

Go where others can't. The machine embodies the full articulated hauler concept and provides total versatility.



# OPERATOR'S CHOICE



When many other machines are onsite, most operators prefer the Volvo. Its comfortable cab and ease of operation, even in adverse conditions, makes operators choose this machine.



# The ultimate operating environment

The A60H is the number one operator's choice because of its industry-leading spacious cab and comfortable work environment. Its superior comfort, control, ease of operation and safety appeals to operators, maintaining productivity all day, every day.

## Total operator control

Stay in control at all times. The dump support system, dynamic Volvo engine brake and load and dump brake, all help the operator to control the machine for extra productivity and safety.



## Ease of operation

The ergonomic, comfortable controls are easy to understand and suit all operators, combined with automatic functions for increased ease of operation.



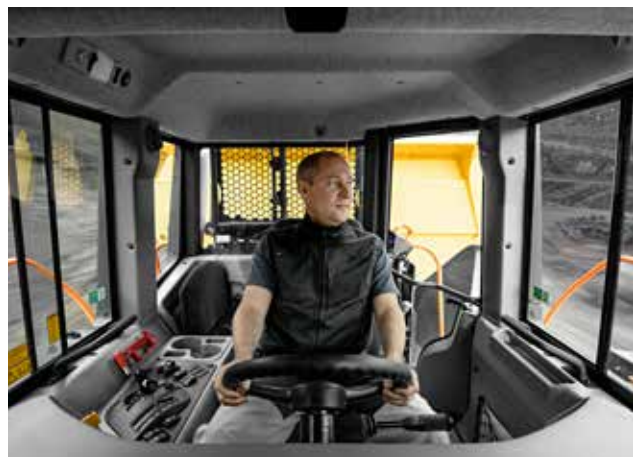
## Operator comfort

Feel comfortable and spend more time in the A60H. The centrally positioned operator, superior steering, excellent suspension, low noise levels, climate control, space and visibility, reduce operator fatigue for more effective operations.



## Safety

A number of safety features such as superior visibility and efficient lighting help to keep the operator and people working around the machine safe in the most demanding working environments – whether it's the operator, trainers, mechanics or site workers.



# Volvo A60H in detail

## Engine

V-ACT, 16 liter, 6-cylinder straight VGT (Variable Geometry Turbocharged) diesel engine with 4 valves per cylinder, overhead camshaft and electronically controlled unit injectors. It has wet replaceable cylinder liners and replaceable valve guides and valve seats.

Engine model	Volvo	D16F
Max power - SAE J1995 Gross	kW	495
	hp	673
at engine speed	r/min	1 800
Flywheel power - ISO 9249, SAE J1349 Net	kW	492
	hp	669
at engine speed	r/min	1 800
Max torque - SAE J1995 Gross	Nm	3 200
Max torque - ISO 9249, SAE J1349 Net	Nm	3 177
at engine speed	r/min	1 050
Displacement	l	16.1

## Electrical System

All cables, sockets and pins are identified. Cables are enclosed in plastic conduits and secured to main frame. Halogen lights. Prewired for options. Connectors meet IP67 standard for water-proofing as necessary.

Voltage	V	24
Battery	V	2x12
Battery capacity	Ah	2x225
Alternator	kW/A	2.264/80
Starter motor	kW	9

## Drivetrain

Torque converter with built-in lock-up function.  
Transmission: Fully automatic Allison planetary transmission with 6 forward gears and 2 reverse gears. Internal torsional damper in the torque converter.  
Dropbox: Volvo-developed, in-line design with high ground clearance and 100% longitudinal "dog clutch" type differential lock.  
Axles: Heavy duty, purpose built Volvo design with fully floating axle shafts, planetary type hub reductions and 100% dog clutch type diff-lock.  
Automatic traction control system (ATC).

Torque converter		1.85:1
Transmission	Volvo	6630 ORS
Dropbox	Volvo	IL3 ATC
Axles	Volvo	AHW80

## Brake System

Fully hydraulic, wet multiple disc brakes with enclosed, forced oil-cooled multiple discs on all wheels. Two circuit brake system. Complies with ISO 3450 at total machine weight.  
Circuit division: One circuit for front axle and one for bogie axles.  
Parking brake: Spring-applied disc brake on the propeller shaft, designed to hold a loaded machine on a grade of up to 18%. When the parking brake is applied, the longitudinal differential is locked.  
Retarder: Service brake retarder function and Volvo Engine Brake (VEB).

## Steering System

Hydro-mechanical articulated steering, self compensating design.  
Two double-acting steering cylinders.  
Steering angle: 3,4 steering wheel turns lock-to-lock, ±45°.  
Steering system, including secondary steering fulfills ISO 5010.

## Chassis

Frames: box type, heavy duty. High strength steel, robot welded.  
Rotating hitch: 100% maintenance free, fully sealed, with permanently greased tapered roller bearings.

## Cab

Mounted on rubber pads. Ergonomically designed. Easy entry and exit. Wide angle forward view.  
Operator centrally positioned above the front axle. Adjustable operators seat with retractable seat belt.  
Tilt/telescopic steering wheel. Ergonomically positioned controls. Filtered air. Optional climate control system.  
Operator communication system: Contronics.  
Large color display, user-friendly and easy-to-understand information, all vital machine functions are constantly monitored.  
Instructor seat with seat belt.  
Safety: ROPS/FOPS standards approved according to ISO3471, SAE J1040 / ISO3449, SAE J231.

Sound level in cab (ISO 6396) - LpA	dB(A)	72
External sound level (ISO 6395) - LwA	dB(A)	113
External sound level with sound kit: 111 dB(A)		

## Hydraulic System

Pumps: Five variable displacement piston pumps driven by the flywheel PTO. One ground-dependent piston pump for secondary steering mounted on the dropbox.  
Two return oil filters with magnetic cores provide effective oil filtration.

System max working pressure	MPa	28
-----------------------------	-----	----

## Dumping System

Patented Load and Dump Brake.  
Dumping Cylinders: two single stage double acting cylinders.

Tipping angle	°	70
Tipping time with load	s	12
Lowering time	s	10

## Body

**Plate thickness**

Front	mm	8
Sides	mm	14
Bottom	mm	16
Chute	mm	16
<b>Material</b>		HB400 steel
Yield strength	N/mm <sup>2</sup>	1 000
Tensile strength	N/mm <sup>2</sup>	1 250

## Load Capacity

**Standard Body**

Load capacity	kg	55 000
Body, struck	m <sup>3</sup>	25.8
Body, heaped 2:1	m <sup>3</sup>	33.6
<b>With overhung tailgate</b>		
Body, struck	m <sup>3</sup>	26.5
Body, heaped 2:1	m <sup>3</sup>	35.1



# Specifications

## REFILL CAPACITIES

Crankcase		55
Fuel tank		750
Cooling system		75
Brake cooling system		131
Transmission		58
Dropbox		12
Axles, front/bogie		74/147
Hydraulic tank		198

## OPERATING WEIGHT UNLOADED

Tires		33.25R29
Front	kg	22 350
Rear	kg	21 050
Total	kg	43 400
Payload	kg	55 000

Operating weight includes all fluids and operator

## TOTAL WEIGHT

Tires		33.25R29
Front	kg	28 700
Rear	kg	69 700
Total	kg	98 400

## GROUND PRESSURE

Tires		33.25R29
<b>Unloaded</b>		
Front	kPa	125
Rear	kPa	58
<b>Loaded</b>		
Front	kPa	159
Rear	kPa	193

## SPEED

<b>Forward</b>		
1	km/h	6.5
2	km/h	9.7
3	km/h	12.9
4	km/h	19.2
5	km/h	25.9
6	km/h	54.9
<b>Reverse</b>		
1	km/h	5
2	km/h	7.5

## Wheel loader PASS MATCHING

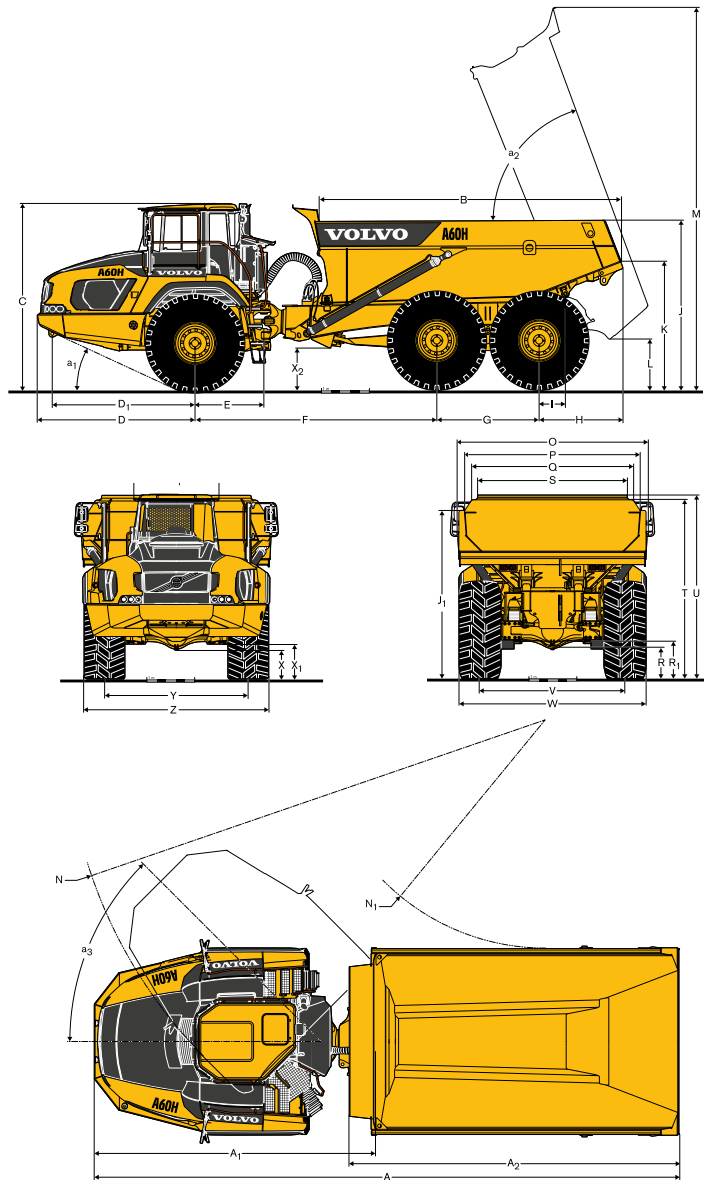
	L220	L250	L350
	Number of passes		
A60H	6	5	4

Well matched, 2-4 buckets.
Loader under capacity, 5 buckets or more.
Loader undersized for optimum match, reach might be an issue.

## Excavator PASS MATCHING

	EC480	EC750	EC950
	Number of passes		
A60H	11	7	6

Well matched, 4-6 buckets.
Excavator under capacity, 7 buckets or more.
Excavator undersized for optimum match.



## DIMENSIONS

Pos	Unit	A60H
A	mm	12 225
A <sub>1</sub>	mm	5 872
A <sub>2</sub>	mm	6 900
B	mm	6 310
C	mm	3 852
C <sub>1</sub>	mm	1 772
D	mm	3 293
D <sub>1</sub>	mm	2 986
E	mm	1 440
F	mm	5 050
G	mm	2 140
H	mm	1 743
I	mm	541
J	mm	3 510
K	mm	2 658
L	mm	1 030
M	mm	7 960
N	mm	10 014
N <sub>1</sub>	mm	4 761

## DIMENSIONS

Pos	Unit	A60H
O	mm	3 989
P	mm	3 673
Q	mm	3 370
R	mm	677
R <sub>1</sub>	mm	778
S	mm	3 126
T	mm	3 734
U	mm	3 833
V	mm	3 010
W	mm	3 884
X	mm	601
X <sub>1</sub>	mm	727
X <sub>2</sub>	mm	845
Y	mm	3 010
Z	mm	3 884
a <sub>1</sub>	°	24.9
a <sub>2</sub>	°	70
a <sub>3</sub>	°	45

A60H: Unloaded machine with 33.25R29 tires.

# Equipment

## STANDARD EQUIPMENT

### Safety

Anti-slip steps and platforms

Dump body lock

Handrails on steps and platforms

Hazard lights

Horn

Protective grill for cab rear window

Rear-view mirrors

Retractable 3-inch safety belt

ROPS/ FOPS protected Care Cab

Secondary steering

Steering joint lock

Windshield washers

Windshield wipers with interval function

Dump support system

### Drivetrain

6x4 and 6x6 automatically engaged drive modes

Dog clutch type 100% diff-locks in all axles

Full automatic transmission

Two stage dropbox with longitudinal diff-lock

Torque converter with automatic lock-up

### Engine

Direct injected, electronically controlled, turbocharged, intercooled

Grouped oil filters, for ease of change

Preheater for easier cold starts

VEB (exhaust retarder EPG + compression brake)

### Electrical system

80 A alternator

Battery disconnect switch

Extra 24 V socket for lunch cooler

Lights:

Back-up light

Brake lights

Cab lighting

Direction indicators

Headlights

Instrument lighting

Parking lights

Rear lights

### Brake system

Hill assist

Load & Dump Brake

Retarder pedal

Parking brake on propeller shaft

Two circuit, fully hydraulic, wet discs on all axles

### Comfort

ACC control panel

Ashtray

Cab heater with filtered fresh air and defroster

Can holder /storage tray

Cigarette lighter

Instructor seat with seat belt

Overhead console for radio

Sliding window

Space for lunch cooler

Storage box

Sun visor

Tilt/telescopic steering wheel

Tinted glass

## STANDARD EQUIPMENT

### Operator information interface

Gauges:

Brake pressure

Fuel

Speedometer

Tachometer

Wet disc brakes cooling oil temperature

On Board Weighing (OBW)

### Warning lights grouped and easy to read

Central warning (3 levels) for all vital functions

### Central positioned information display

Automatic pre-start checks

Clock

Hour meter

Operational information, easy-to-navigate menu

Troubleshooting diagnostics

### Body

Body prepared for exhaust heating and optional equipment

### Exterior

Front mudguard wideners and rear mudflaps

### Tires

33,25R29

800/80R29

### Service and maintenance

Electrical engine hood and belly plate

Machine Tracking Information System MATRIS

Service platform integrated in the front grill

Tool box



---

**OPTIONAL EQUIPMENT**

---

**Safety**

Fire suppression system  
Warning triangle  
First aid kit and fire extinguisher  
Wheel chocks

**Engine**

Air pre-cleaner, cyclone type  
Air pre-cleaner, oil-bath type  
Air filter, heavy duty, EON  
Engine heater, 120 V, USA  
Engine heater, 240 V  
Engine heater, diesel (Eberspächer)  
Engine auto shutdown  
Engine shutdown timer  
External emergency engine stop  
Fuel filter, extra  
High engine idle speed

**Electrical system**

Headlights, LED  
Warning beacon, LED  
Working lights, LED  
Entrance light  
Anti-theft system (pin code)  
Rear view camera  
Reverse alarm

---

**OPTIONAL EQUIPMENT**

---

**Cab**

Noise reduction kit (fulfils 2000/14/EC)  
Anchorage, operator's manual  
Cab heating/ventilation timer  
Cable kit, for cab heater 120 V/ 240 V  
HEPA cab air filter  
Bluetooth radio kit  
Rear view mirrors, adjustable, el.heated  
Seat belt XXL, non-retractable  
Sun blinds, side windows  
Universal key  
Air suspended, heated, fully adjustable seat  
Armrest for operator seat  
Headrest for operator seat

**Body**

Body exhaust heating  
Front spillguard, extra  
Side extension, light material 850mm  
Tailgate, overhung, linkage-operated  
Tailgate, overhung, wire-operated  
Tailgate, underhung  
Wear plates, 450 HB

**Tires**

800/80 R29  
33,25 R29

**Service and maintenance**

Lube system, standard machine  
Tool kit

**Other**

Siberian kit -40°C  
Arctic oil kit  
CareTrack  
Fast fuelling system  
Jump start connector, NATO -type

---

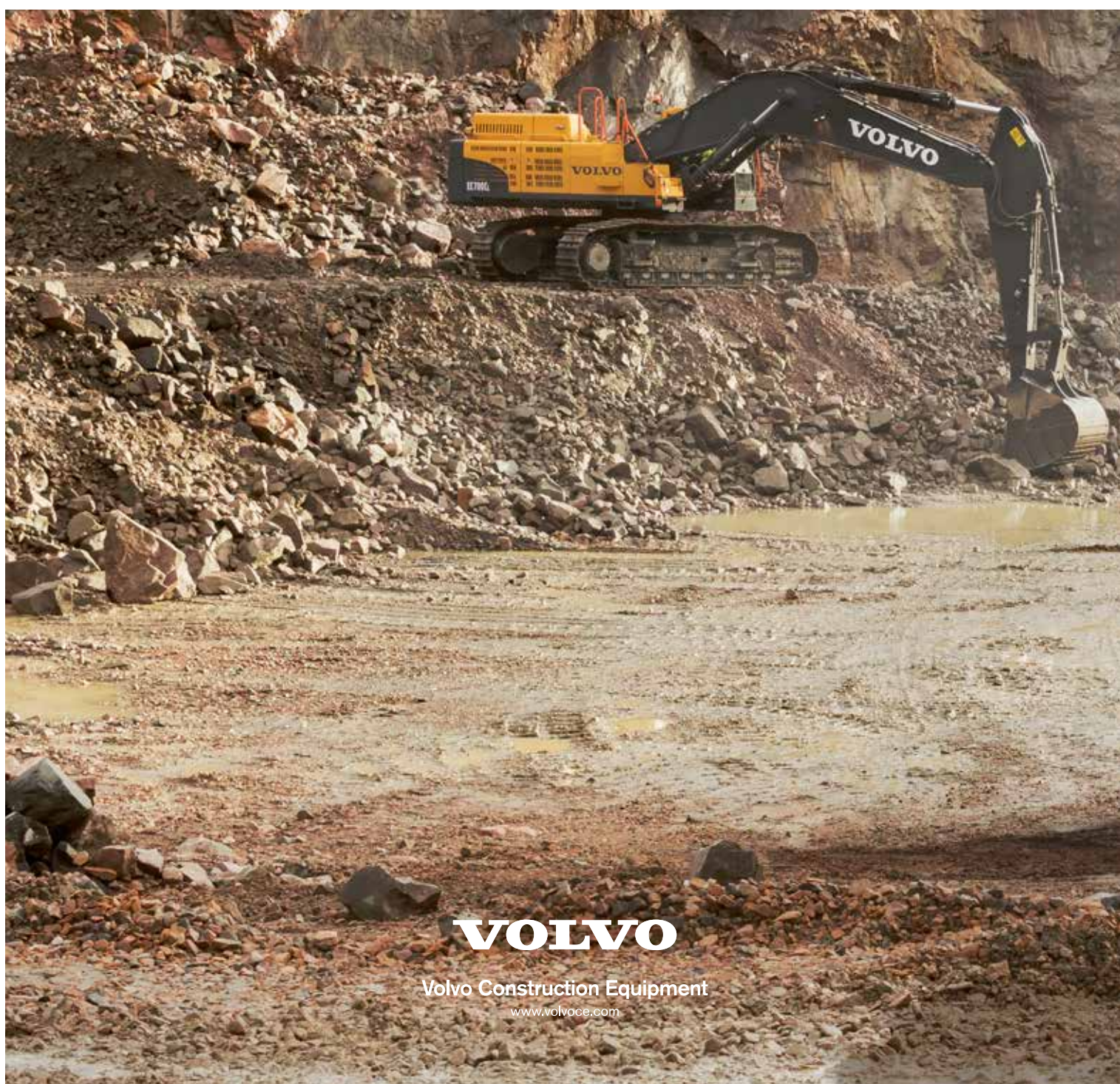
**SELECTION OF VOLVO OPTIONAL EQUIPMENT**

---

**Rear view camera and monitor****Tailgate****Oil bath pre-cleaner****Fast fuelling****Volvo fire suppression system**

Not all products are available in all markets. Under our policy of continuous improvement, we reserve the right to change specifications and design without prior notice. The illustrations do not necessarily show the standard version of the machine.





**VOLVO**

Volvo Construction Equipment

[www.volvoce.com](http://www.volvoce.com)